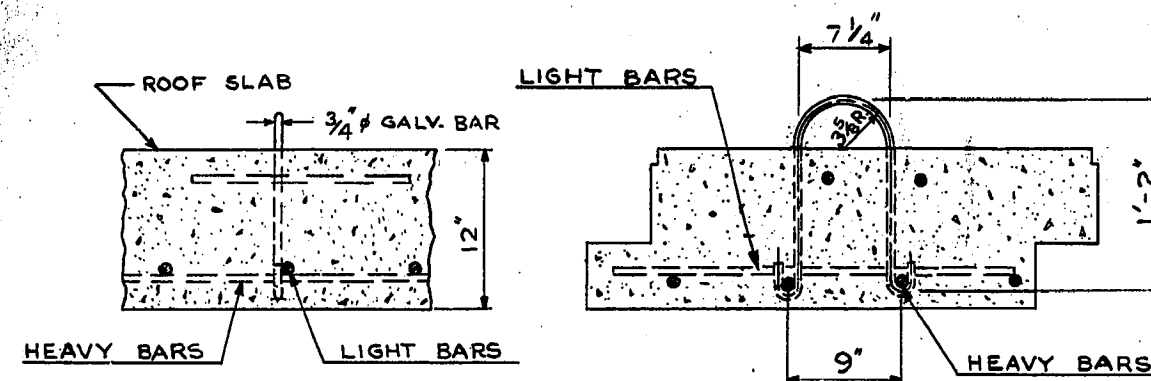


CROSS-SECTION LONG-SECTION

DETAIL OF U-BOLT HOOK

SCALE: 1"=1'-0"



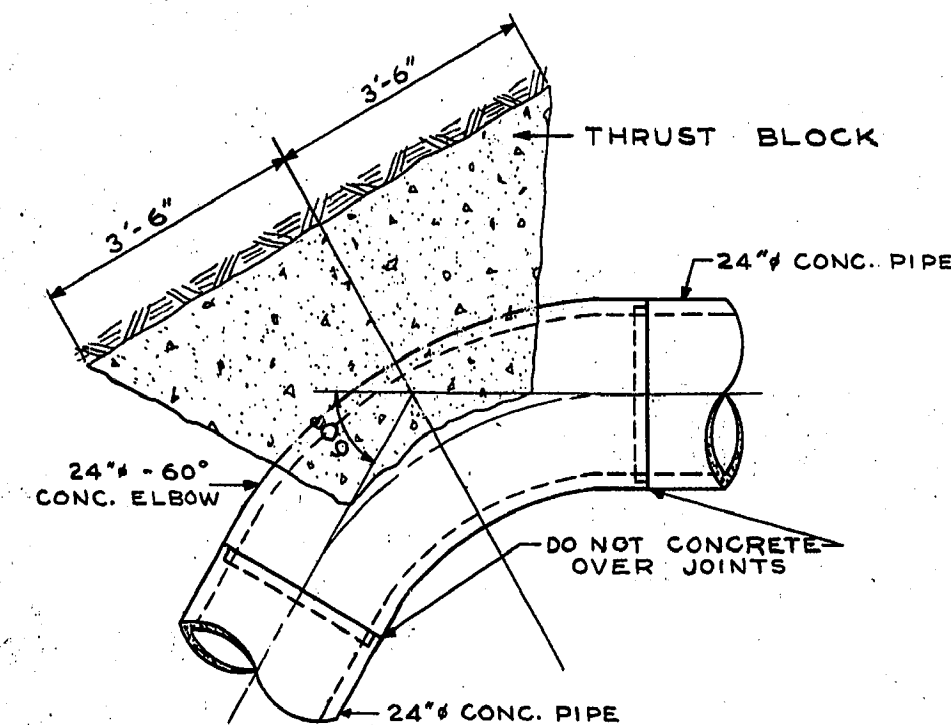
CROSS-SECTION LONG-SECTION

DETAIL OF LIFTING LUG

SCALE: 1"=1'-0"

NOTES: (REFERING TO METER PIT AT STA. 2+04.10 - SEE DWG. D-1110)

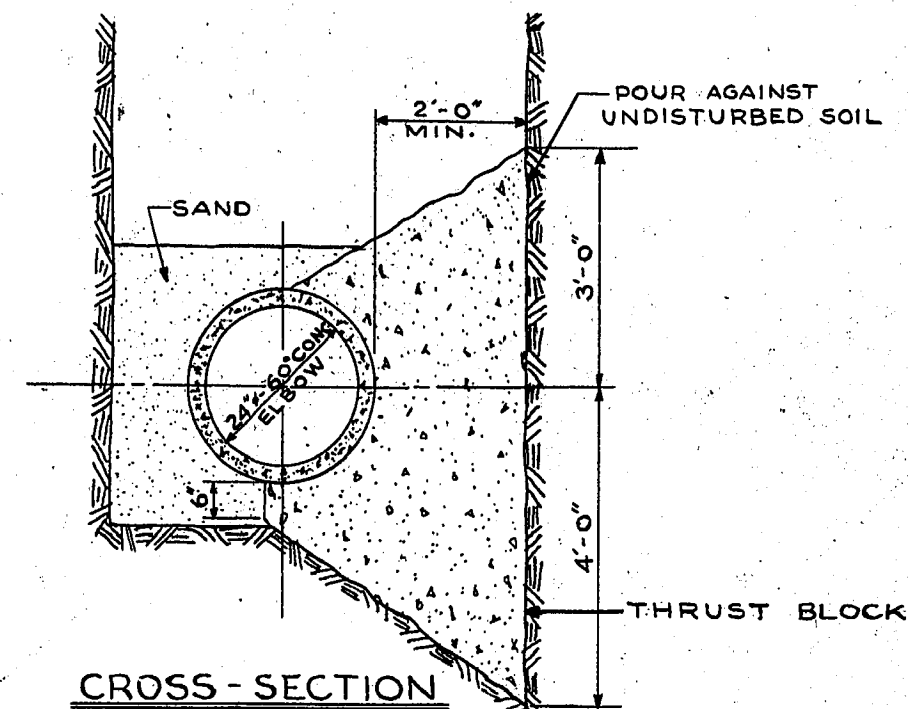
1. ALL PRECAST CHAMBER SLABS ARE TO BE NUMBERED ON THE UNDERSIDE IN THE ORDER BY WHICH THEY CAN BE REMOVED. CAST IN TYPICAL HOUSE NUMBERS.
2. PLACE BUILDING PAPER BETWEEN VALVES AND CONCRETE SADDLES, BETWEEN ELBOWS AND CONCRETE SADDLES AND BETWEEN CONCRETE BASE AND METER.
3. ALL EXTERIOR AND INTERIOR CORNERS, INCLUDING PRECAST SLABS, TO BE CHAMFERED AS SPECIFIED IN THE SPECIFICATIONS.
4. THE VICTAULIC COUPLINGS TO BE STYLE # 44.
5. FITTINGS REQUIRED FOR EACH 8" C.I. SHORT WITH 3" OUTLETS.
 - ON TOP OF 8" SHORT
 - 3" NIPPLE (SCREW TO SCREW-ON-FLANGE)
 - 3" C.I. GATE VALVE FLANGED WITH BRONZE TRIM
 - ON BOTTOM OF 8" SHORT
 - 3" NIPPLE (SCREW TO SCREW-ON-FLANGE)
 - 3" GATE VALVE FLANGED WITH BRONZE TRIM
 - 3" 90° GALV. BASE ELBOW (FLANGE TO SCREW)-DIRECT ELBOW TOWARDS MANHOLE OPENING.
6. FITTINGS REQUIRED FOR ITEMS B. AND E.
 - ON TOP OF 24" PIPE
 - 2" NIPPLE (SCREW TO SCREW-ON-FLANGE) - SUPPLIED WITH PIPE.
 - 2" C.I. GATE VALVE FLANGED WITH BRONZE TRIM
 - ON BOTTOM OF 24" PIPE
 - 3" NIPPLE (SCREW TO SCREW-ON-FLANGE) - SUPPLIED WITH PIPE.
 - 3" C.I. GATE VALVE FLANGED WITH BRONZE TRIM
 - 3" 90° GALV. BASE ELBOW (FLANGE TO SCREW) - DIRECT ELBOW TOWARDS MANHOLE OPENING.
7. ALL FITTINGS TO BE MADE OF BRONZE UNLESS SPECIFIED OTHERWISE.
8. SEE DWG. C-480 FOR ELECTRICAL REQUIREMENTS.



PLAN

DETAIL OF THRUST BLOCKS NOS. 1 & 2 FOR 24" CONC. PIPE - 60° ELBOW

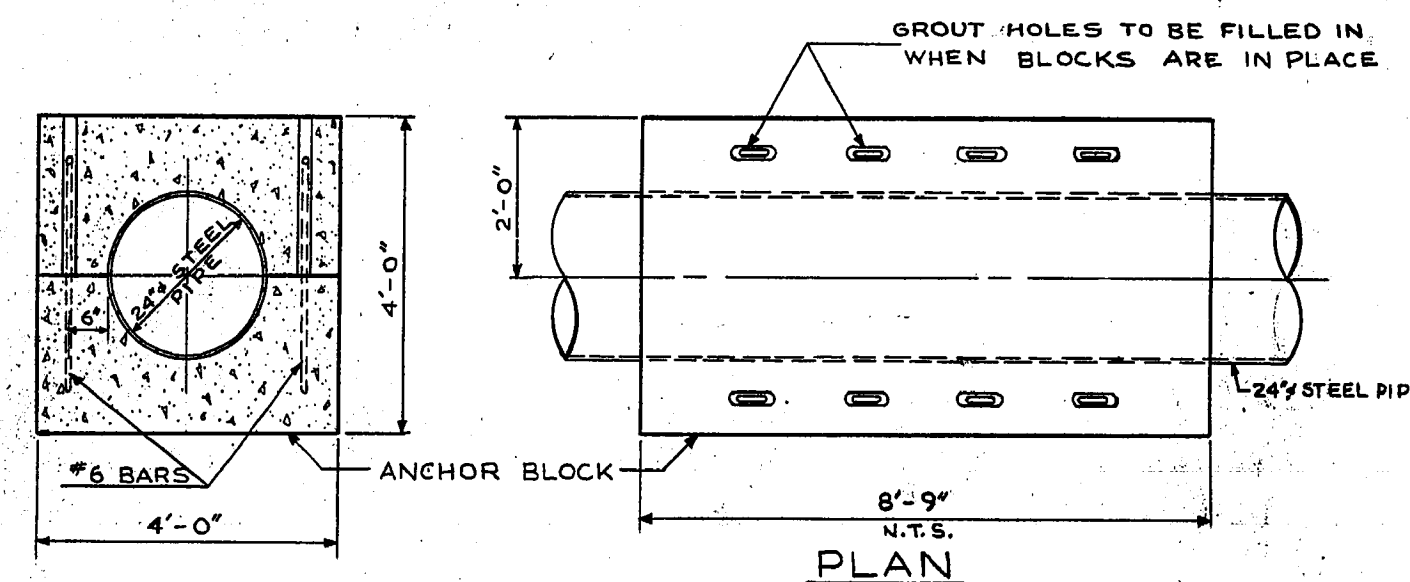
SCALE: 1/2"=1'-0"



CROSS-SECTION

LIST OF THRUST BLOCKS FOR 24" CONC. PIPE			
NO.	LOCATION	ANGLE	BEARING AREA
1	60° ELBOW AT P.I. STA.	60°00'00"	7'-0" x 7'-0"
2	60° ELBOW AT P.I. STA.	60°00'00"	7'-0" x 7'-0"
3	END OF CONTRACT STA. 9+49.63		7'-0" x 7'-0"

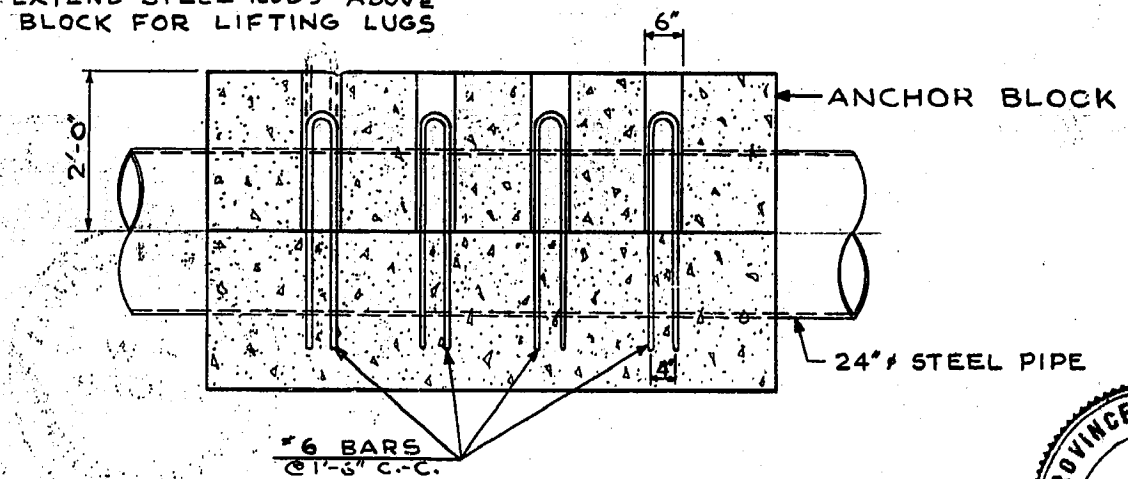
LIST OF ANCHOR BLOCKS FOR 24" STEEL PIPE		
NO.	LOCATION	LENGTH
1	STA. 5+05	8'-9"
2	STA. 5+70	8'-9"
3	STA. 6+45	8'-9"
4	STA. 7+15	8'-9"



CROSS-SECTION

PLAN

OPTIONAL - EXTEND STEEL RODS ABOVE BLOCK FOR LIFTING LUGS



LONG-SECTION

TYPICAL DETAIL OF ANCHOR BLOCKS - FOR 24" STEEL PIPE

SCALE: 1/2"=1'-0"

